

# Lepidoptera Expedition 2017

Peruvian Amazon - Las Piedras River



Deborah J. Paschall

9 COUNTRIES COVER THE AMAZON  
BRAZIL (64%), PERU (10%), COLUMBIA, BOLIVIA, VENEZUELA,  
GUYANA, SURINAME, ECUADOR, FRENCH GUIANA



THE JUNGLE CITY

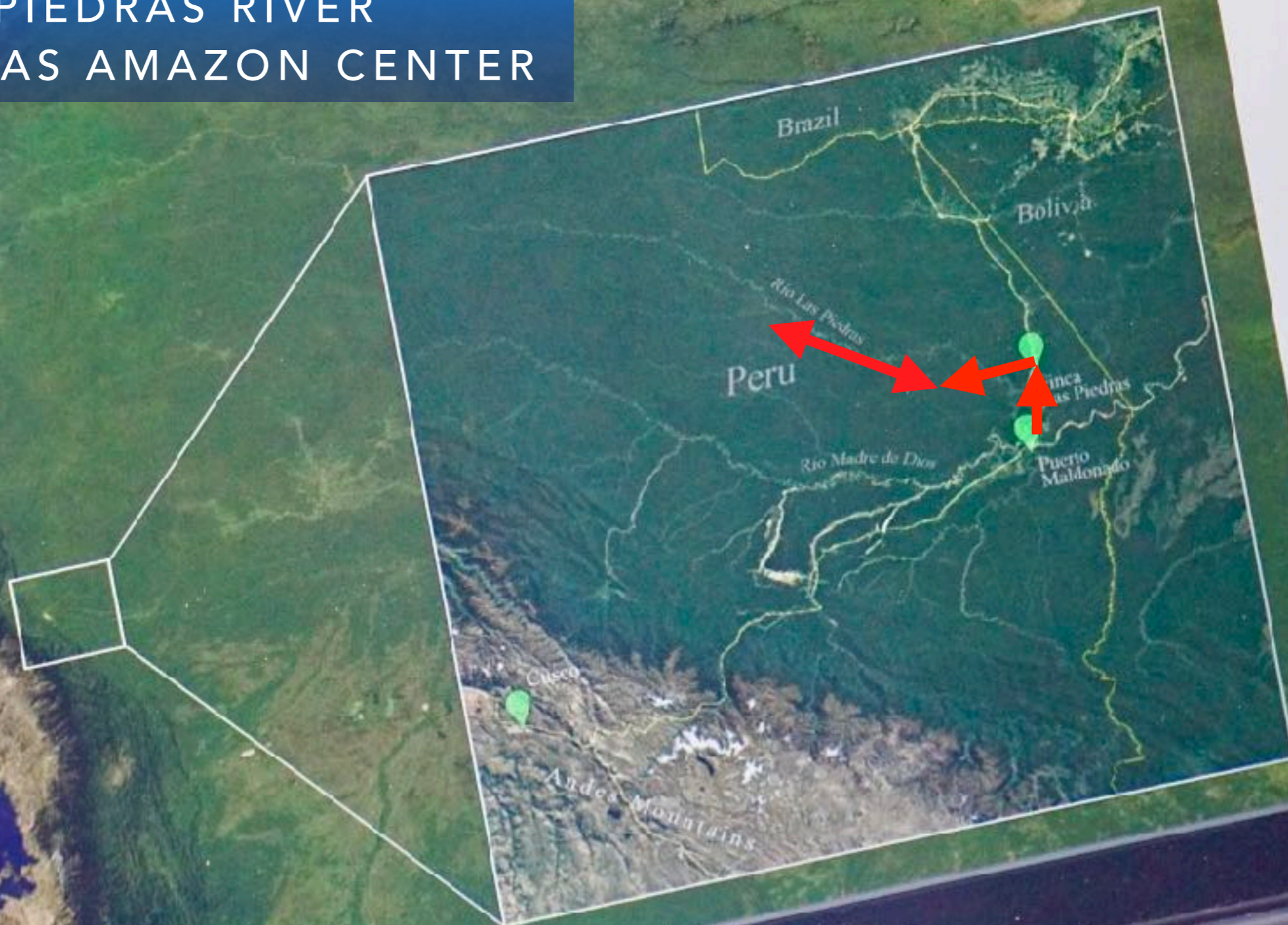
# PUERTO MALDONADO

LAS PIEDRAS RIVER  
LAS PIEDRAS AMAZON CENTER

LIMA



CUSCO



# THREATS TO THE RAINFORESTS



Completed Highway

- ILLEGAL LOGGING
- ILLEGAL GOLD MINING
- ILLEGAL BRAZIL NUT HARVESTING
- INTEROCEANIC HIGHWAY

# INTEROCEANIC HIGHWAY

- 1,615.57 Miles - Coast To Coast
- Connects Brazil's Atlantic Coast With Peru's Pacific Ports
- **Pros** - Brings In Goods, Work And Opportunities For Residents, Aid Residents In Easier Travel, Invites New Ways To Make A Living, I.E., Farming, Tourists Development, Roadside Businesses, Numerous Economic Advantages
- **Cons** - Open Up Pristine Forest Areas Making Them Accessible. Encourages Squatter Communities To Develop. Brings In Crime, Illegal Deforestation, Gas Wars, Prostitution, Corrupt Governments, No Policing, No Security For Tourists, Etc.



# Roadside Motels Failing



SIGN OF INCREASED TOURISTS AND BUSINESS

NEW (TINY) AIRPORT AT PUERTO MALDONADO



# EXPEDITION LOCATIONS...

- Finca Las Piedras (farm)
- Las Piedras Amazon Center
- Las Piedras River
- Monte Salvador (Cancelled)
- Puerto Nuevo (Dropped In)







# THE BATH POOL





















RIO LAS PIEDRAS  
ENTERING  
LAS PIEDRAS  
AMAZON CENTER





11 SPECIES OF MONKEYS, CANOPY CAMERA WILDLIFE, ETC.  
NAT. GEO. FILMING "HOSTILE PLANET"- 4 MOS. = 4 MINS.

# CURRENT RESEARCH



# Lisa Lot , Netherlands Certified Primatologist

11 species of Monkeys at LPAC











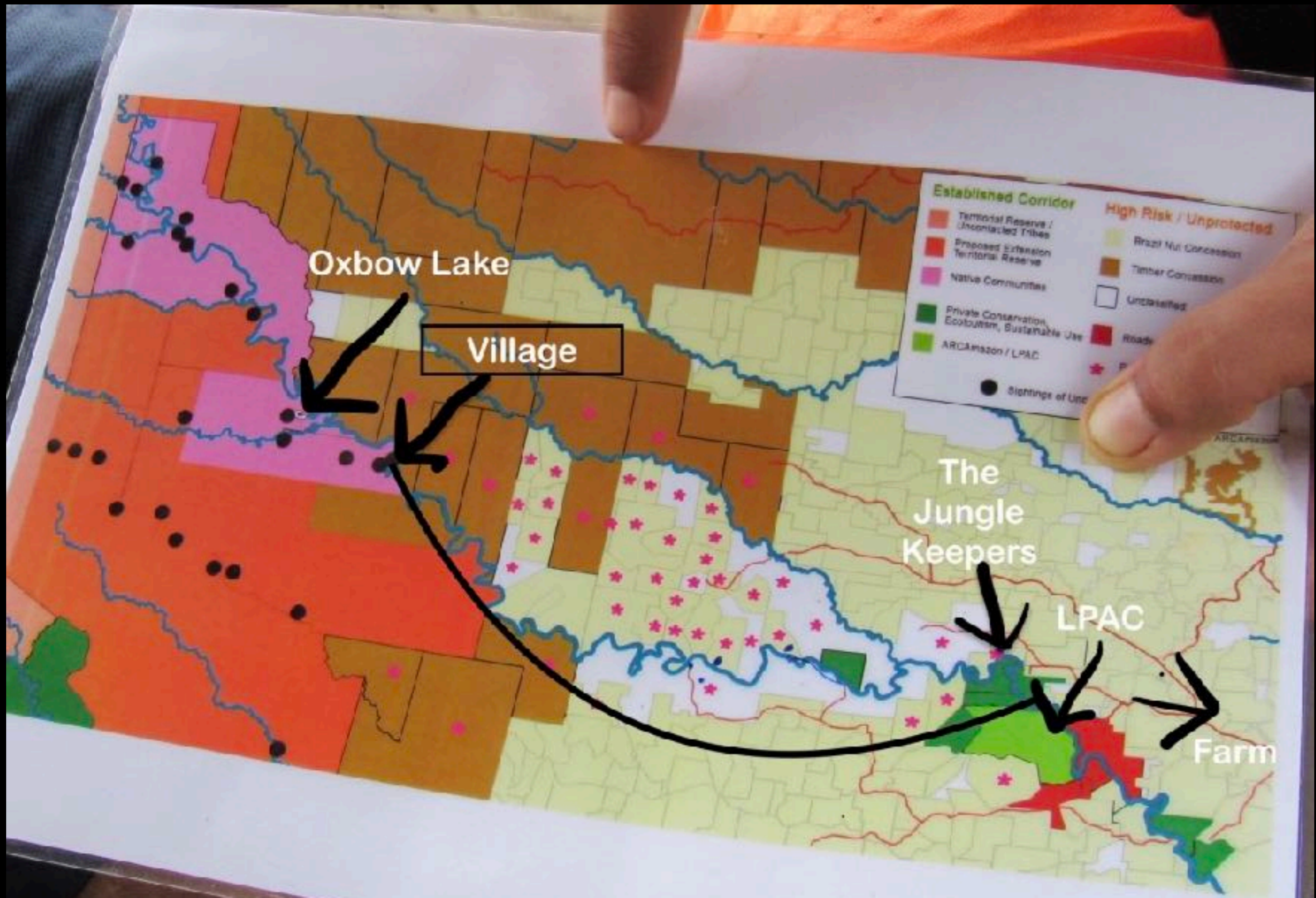


# Las Piedras River 5 Days on the River

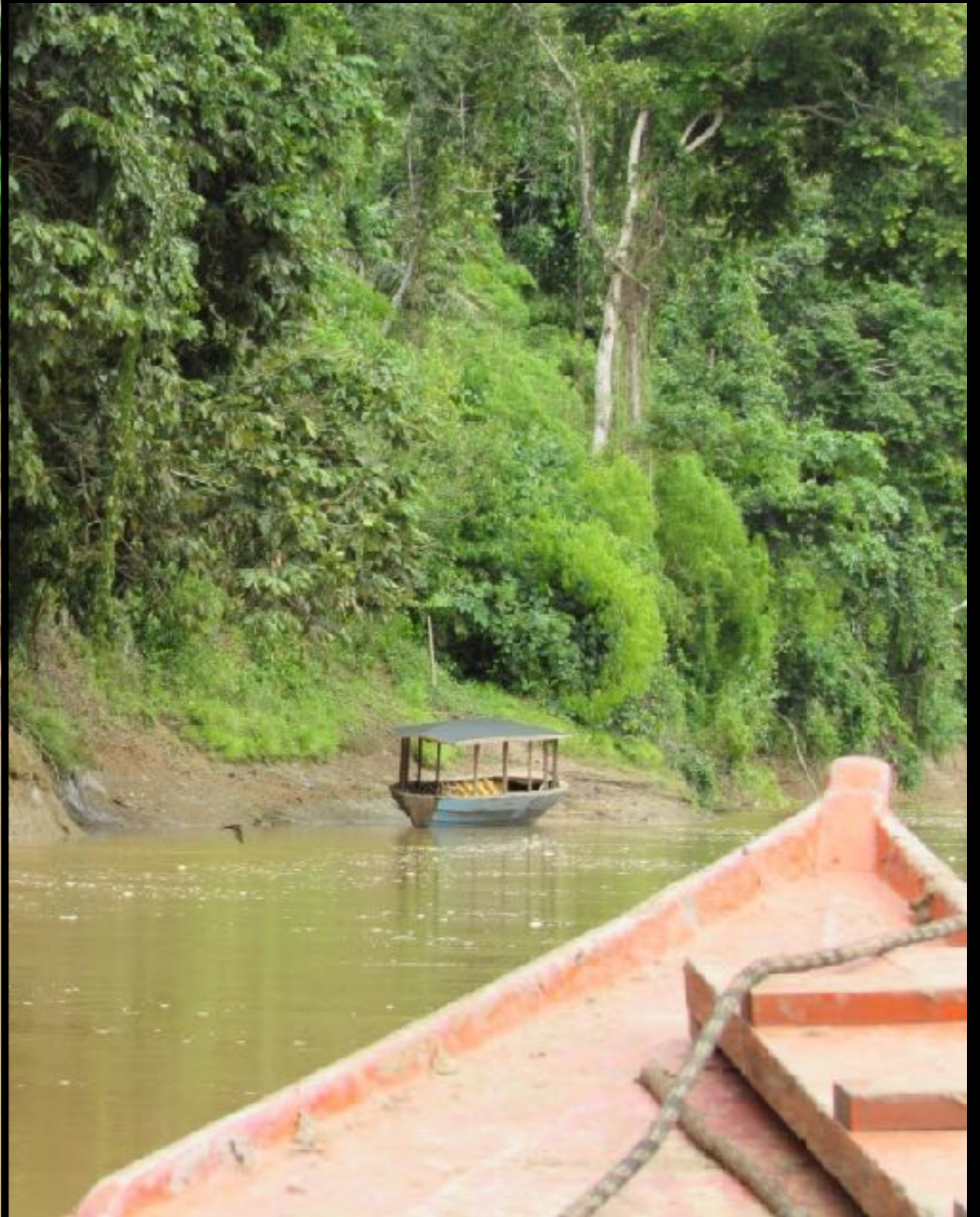




We documented wildlife sightings & Illegal activity using GPS coordinates to be added to this map.



# Signs of illegal logging.



## NOTICE

The logs are precision cut before leaving the forest. This would allow them to get more sellable wood on each truck and make transport easier. The same goes for the river transport.



# Possible illegal Brazil nut harvesting.











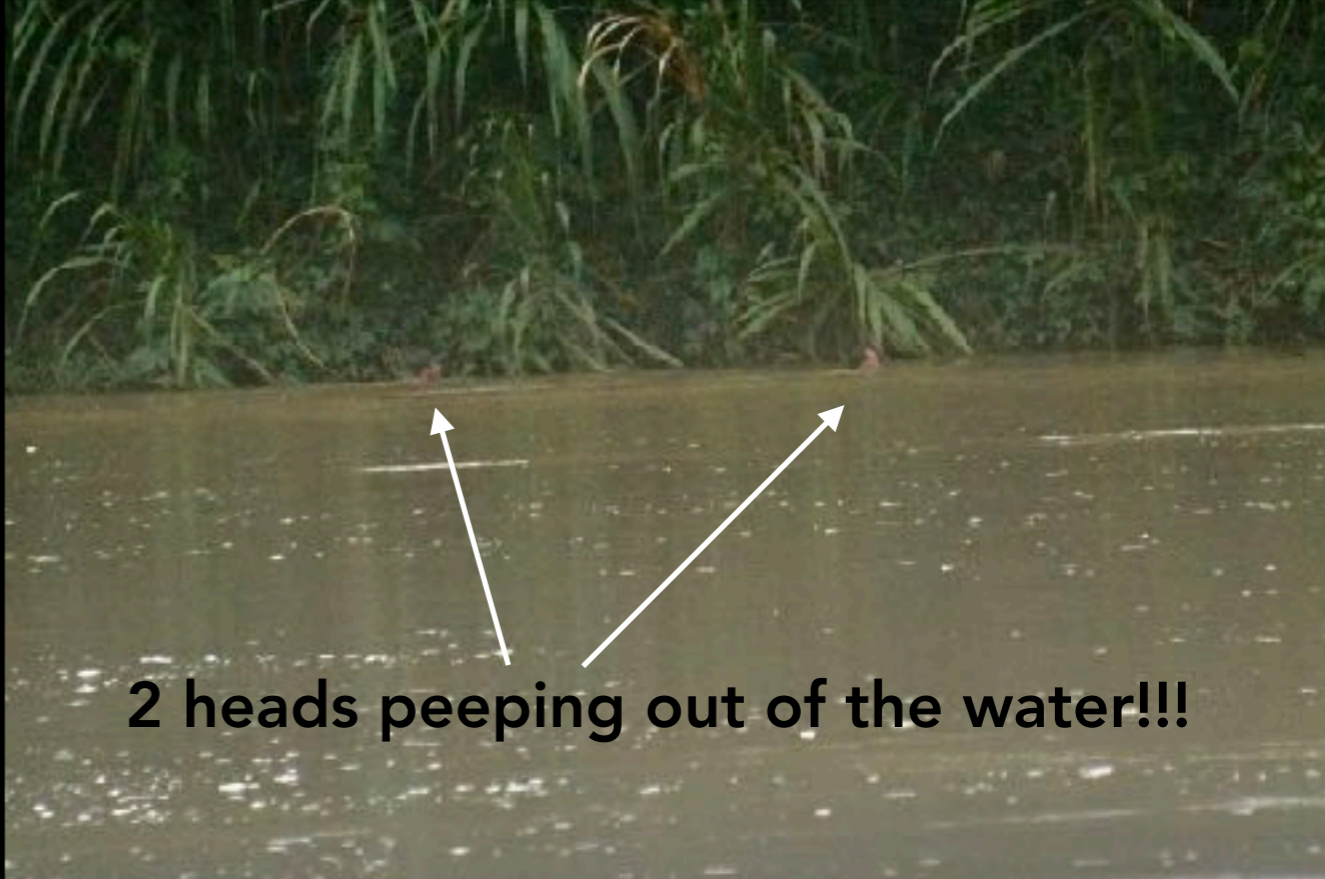
AND THEN...the adventure GOT REAL!!!







**Geoff and David swim across upstream!!!**



**2 heads peeping out of the water!!!**



**Our leaders arrive and what???**

**Jose's in his underwear!!!**

# Visions of GILLIAN'S ISLAND !!!!





Victor is the MAN!  
Swims across and  
poles over to retrieve  
clothes, gear, and  
food!





# BRAZIL NUT FARMERS TO THE RESCUE!!!



Surviving the damage we found a few eggs were lost, 3 chickens went to the River Gods, yet even after being in his underwear, Jose had dinner promptly at 7 p.m Kyle broke out his music which "lightened" the mood!



# MUDDY CAMPSITE



AWESOME PLACE TO EXPLORE  
AND PHOTOGRAPH

# Muddy vs. Beach Campsite





Lunch, potty breaks and camping on the beaches.



# CAPYBARA



# TAPIR



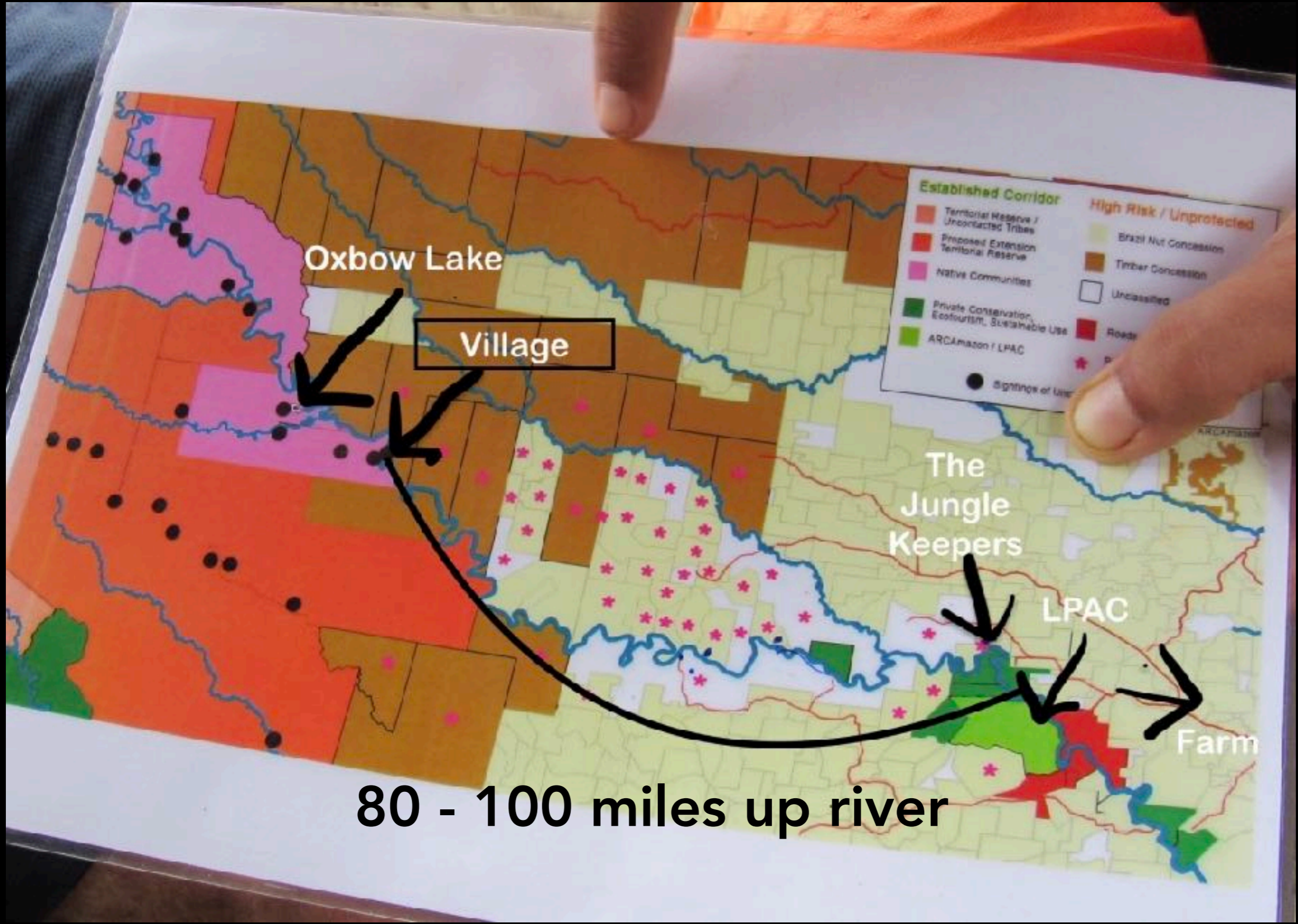






BUTTERFLIES  
LOVE  
SALTY TEARS





Oxbow Lake

Village

The  
Jungle  
Keepers

LPAC

Farm

80 - 100 miles up river

- | Established Corridor                               | High Risk / Unprotected |
|--|-------------------------|
| Territorial Reserve / Uncontacted Tribes           | Brazil Nut Concession   |
| Proposed Extension Territorial Reserve             | Timber Concession       |
| Native Communities                                 | Unclassified            |
| Private Conservation, Eco-tourism, Sustainable Use | Roads                   |
| ARCAmazon / LPAC                                   |                         |
| Signposts of Use                                   |                         |

# PEURTO NUEVO



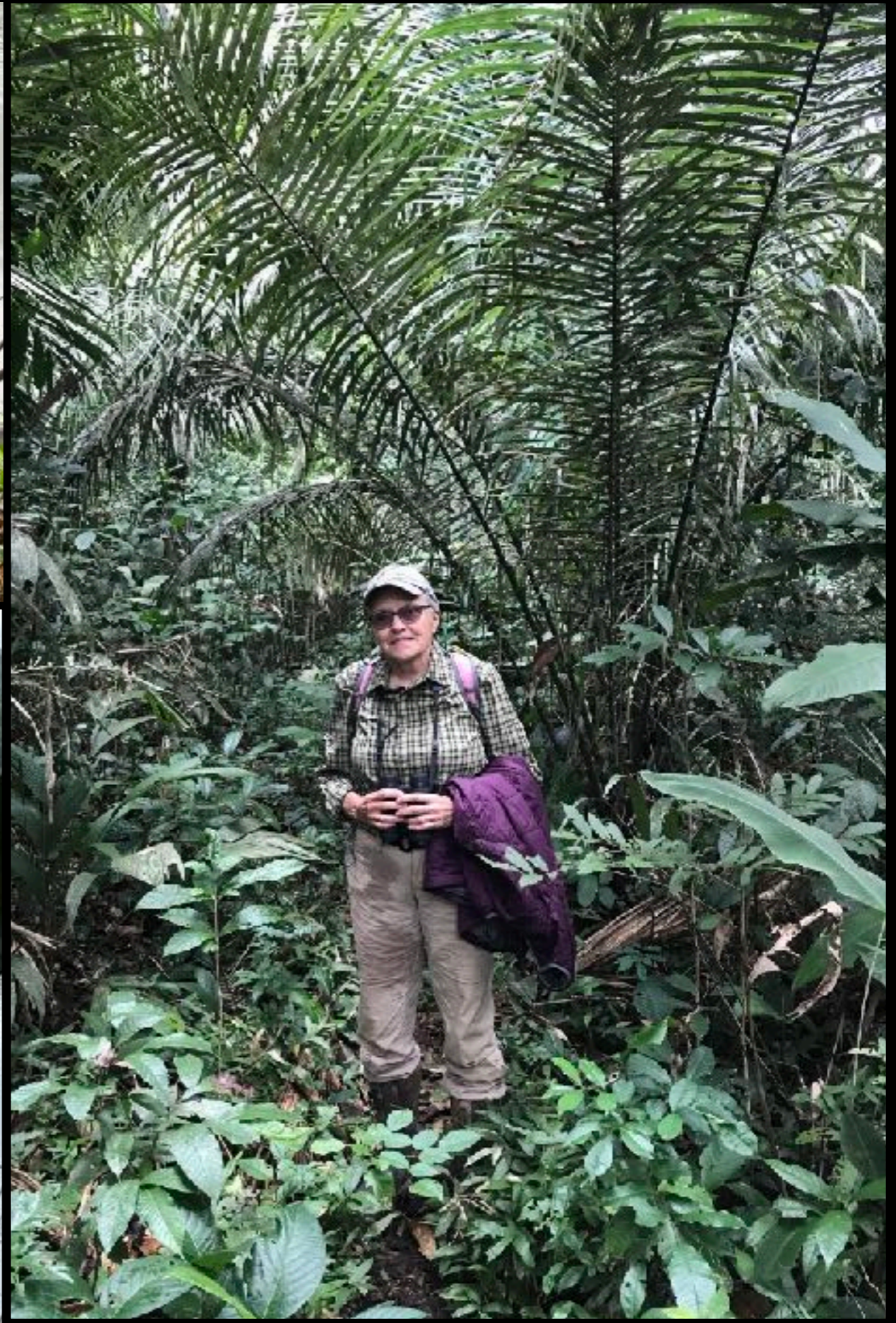






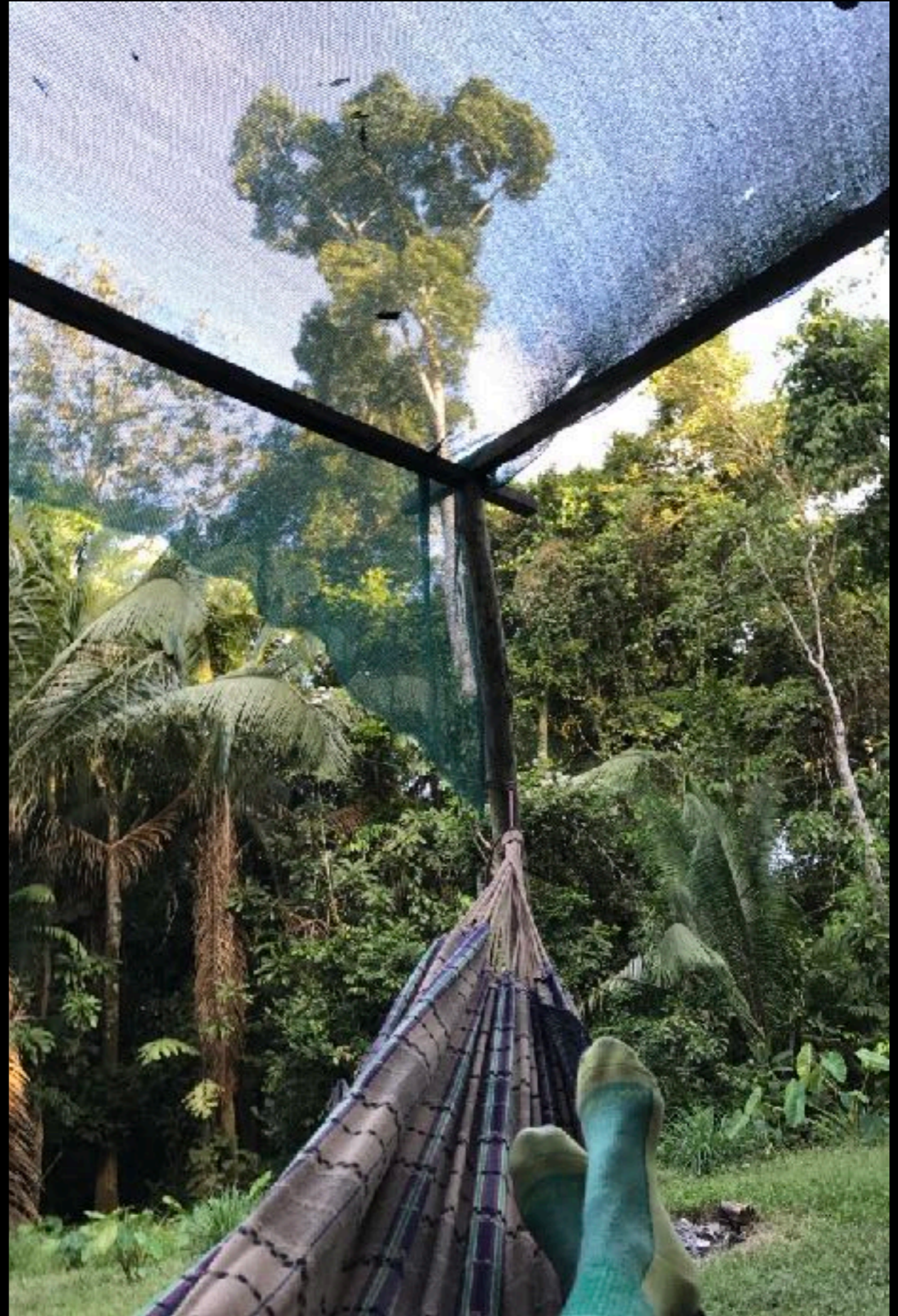














THE END OF THE RIVER TRIP and  
THE END OF THIS PRESENTATION

LAS PIEDRAS AMAZON CENTER

# THE PERUVIAN AMAZON

